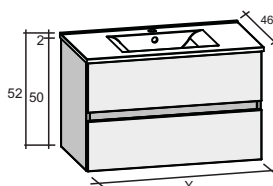
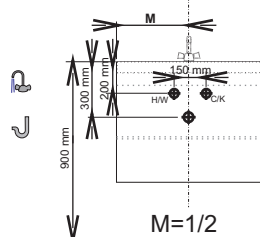


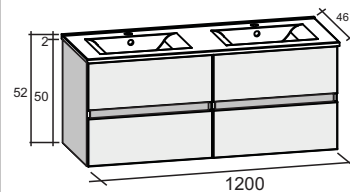
1 tap hole
1 drain hole



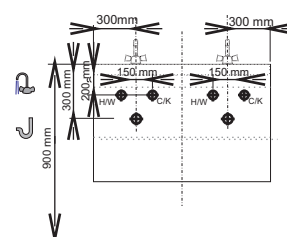
Y = 600-800-1000mm



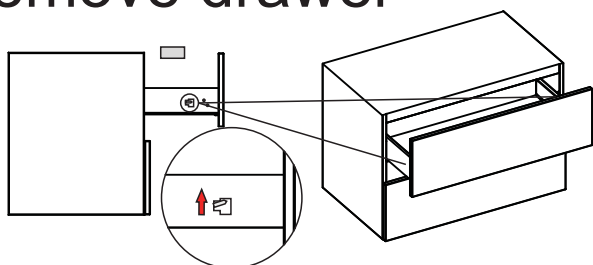
2 tap holes
2 drain holes



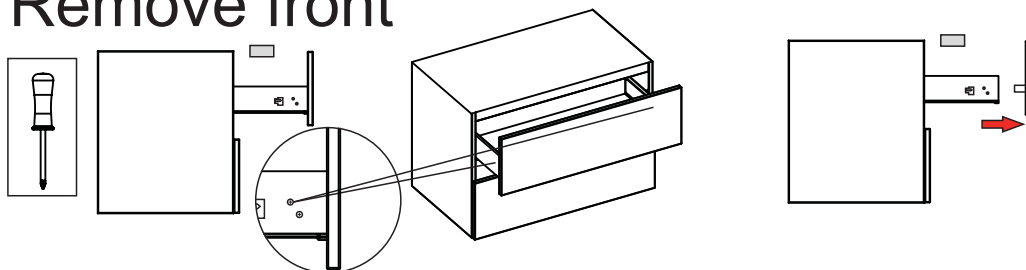
Y = 1200mm



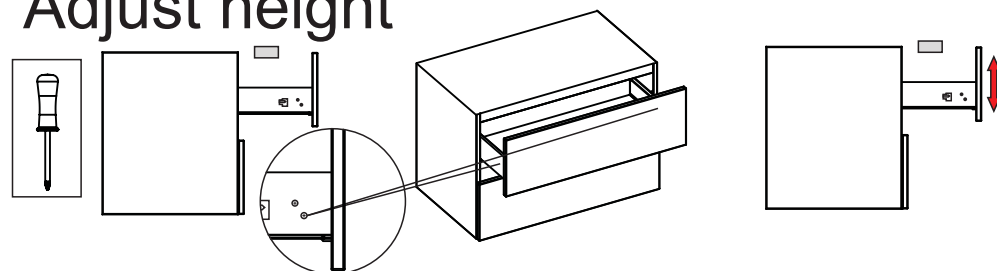
Remove drawer



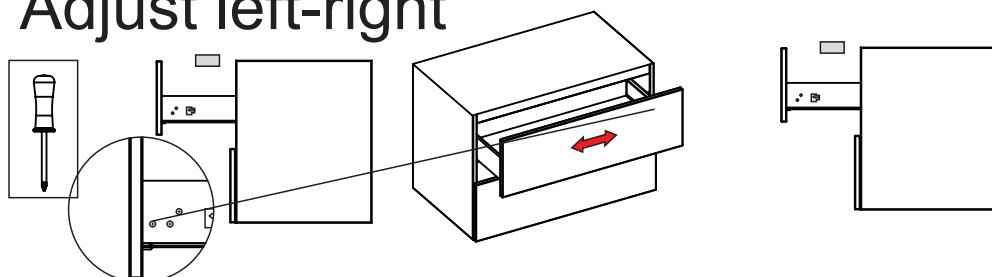
Remove front



Adjust height



Adjust left-right



Wall mount:

<p>8mm 8x 8x 2x</p>	<p>1 Y=600/800/1000mm</p> <p>Y 18mm 18mm Y-77 Y-36 704mm 830mm</p>	<p>2</p> <p>ø8mm 8x</p>
<p>3</p>	<p>4</p>	<p>5</p>

Built - in led driver

